



Product overview

SOMMER
automatic

Request our catalogue
[info@sommer-automatic.com!](mailto:info@sommer-automatic.com)



➤ Grippers <i>pneumatic</i>	01
➤ Grippers <i>electrical</i>	02
➤ Grippers <i>hydraulic</i>	03
➤ Grippers <i>Special</i>	04
➤ Grip & Rotate Modules <i>pneumatic</i>	05
➤ Separators	06
➤ Swivel Units <i>pneumatic</i>	07
➤ Swivel Units <i>electrical</i>	08
➤ Swivel Units <i>hydraulic</i>	09
➤ Rotation Jaws <i>pneumatic</i>	10
➤ Axial Compensation Modules	11
➤ Tool Changers	12
➤ Robotics Accessories	13
➤ Linear Cylinders	14
➤ Shock Absorber	15
➤ Air Vane Motors	16
➤ Rotary Cylinders	17
➤ Vacuum Components	18
➤ Accessorios	19

New **Products**

The Sommer-automatic catalogue features several innovative new products that will continue to provide solutions for your automation applications. This catalogue contains an impressive range of product capabilities.

In this product overview you will find all new products and features.

Catalogue: Gripper pneumatic

GP400-B Series

- overlapping T-slot guides for maximum force and moment resistance
- position sensing via magnetic field sensor
- dust protector available

MGP800 Series

- minimized dimensions, five sizes, stroke up to 6 mm per jaw
- available with mechanical gripping force safety device

GP1800-B Series

- strong and precise square flat guide for higher strength and moment absorption
- position sensing via magnetic field sensor

GHK6000 Series

- GH Series with clamping
- safety device in the event of pressure loss

GD300-B Series

- sensing of 3 position via proximity switch possible
- position sensing via magnetic field sensor
- dust protector available

GD1700-B Series

- sensing of 3 position via proximity switch possible
- position sensing via magnetic field sensor

GG2000 Series

- sealed mechanics, for use in dirty/wet environments and 90° stroke per jaw
- position sensing via magnetic field sensor

GK Series

- opening-angles infinitely adjustable from 1° to 180°
- self-locking by spring and mechanically self-locking, when gripper is in full closed position

MGW800 Series

- minimized design, five sizes, with a gripping moment up to 1,1 Nm
- available with mechanical gripping force safety device



Catalogue: Gripper electrical

GEH Series

- • AC servo motor control with programmable gripping force and/or position
- protection type IP65

Catalogue: Special Gripper

GFP Series

- • opening of the gripper by pressure of inner coolant, supplied through the spindle's center bore
- closing of the gripper by integrated spring
- standardised coupler

Catalogue: Swivel Units electric

DES Series

- • freely programmable dynamics, speed and stop moment adjustable
- protection type IP65

Catalogue: Robotic Asseccories

- • wide range of system components (Tool Changer, Manual Changers, Axial Compensation Modules and Rotary Pneumatic Manifolds)
- partial circuit produced in accordance with EN ISO 9409-1, for direct connection to the robots

Catalogue: Air Van Motors

- • new with five slats for improved starting behaviour and improved efficiency
- durability up to 100 million load cycles

Parallel **Grippers**

NEW

with T-slot guides

Order no.	Stroke per jaw [mm]	Gripping force [N] max.	Catalogue no.
Product Information			01
GP403N, NC, NO-B	3	90	01
GP404N, NC, NO-B	4	155	01
GP404S, SC, SO-B	2	350	01
GP406N, NC, NO-B	6	290	01
GP406S, SC, SO-B	3	650	01
GP408N, NC, NO-B	8	560	01
GP408S, SC, SO-B	4	1.260	01
GP410N, NC, NO-B	10	780	01
GP410S, SC, SO-B	5	1.760	01
GP412N, NC, NO-B	12	1.400	01
GP412S, SC, SO-B	6	3.000	01
GP416N, NC, NO-B	16	2.050	01
GP416S, SC, SO-B	8	4.550	01
GP420N, NC, NO-B	20	3.200	01
GP420S, SC, SO-B	10	7.000	01
GP430N, NC, NO-B	30	6.900	01
GP430S, SC, SO-B	15	15.000	01



NEW

with flat guides

Order no.	Stroke per jaw [mm]	Gripping force [N] max.	Catalogue no.
Product Information			01
MGP801N	1	8	01
MGP802N	2	19	01
MGP803N	3	42	01
MGP803NC	3	60	01
MGP804N	4	66	01
MGP804NC	4	95	01
MGP806N	6	119	01
MGP806NC	6	132	01



Parallel Grippers

with roller guides

Order no.	Stroke per jaw [mm]	Gripping force [N] max.	Catalogue no.
Product Information			01
GP12-B	3	8,4	01
GP19-B	4	36	01
GP30-B	5	94	01
GP45-B	5	118	01
GP75-B	10	220	01
GP100-B	13	450	01



with precise flat guides

Order no.	Stroke per jaw [mm]	Gripping force [N] max.	Catalogue no.
Product Information			01
SGP14N	2	39	01
SGP14NC	2	39	01
SGP25N	4	170	01
SGP25NC	4	170	01
SGP35N	6	305	01
SGP35NC	6	305	01



with bearing guides

Order no.	Stroke per jaw [mm]	Gripping force [N] max.	Catalogue no.
Product Information			01
GP103	3	41	01
GP104	4	104	01
GP105	5	230	01
GP110	10	430	01
GP115	15	1.000	01



Parallel **Grippers**

with flat guides

Order no.	Stroke per jaw [mm]	Gripping force [N] max.	Catalogue no.
Product Information			01
GP604N, NC, NO	4	150	01
GP604S, SC, SO	2	340	01
GP608N, NC, NO	8	520	01
GP608S, SC, SO	4	1.180	01
GP612N, NC, NO	12	1.300	01
GP612S, SC, SO	6	2.950	01



with square guides

Order no.	Stroke per jaw [mm]	Gripping force [N] max.	Catalogue no.
Product Information			01
GP224-B	12	170	01
GP224-B-99	12	160	01
GP224S-B	6	335	01
GP224S-B-99	6	335	01
GP240-B	20	510	01
GP240-B-99	20	435	01
GP240S-B	8	1.290	01
GP240S-B-99	8	1.105	01
GP260	30	800	01
GP260-99	30	665	01
GP260S	10	2.480	01
GP260S-99	10	2.120	01
GP280	40	1.690	01
GP280-99	40	1.390	01
GP280S	15	4.500	01
GP280S-99	15	3.690	01



Parallel Grippers

with sealed flat guides

Order no.	Stroke per jaw [mm]	Gripping force [N] max.	Catalogue no.
Product Information			01
GP1224N, NC, NO	12	155	01
GP1240N, NC, NO	20	465	01
GP1260N, NC, NO	30	780	01
GP1280N, NC, NO	40	1.550	01



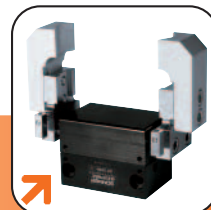
with sealed 4-square guides

Order no.	Stroke per jaw [mm]	Gripping force [N] max.	Catalogue no.
Product Information			
GP1803N, NC, NO-B	3	68	01
GP1804N, NC, NO-B	4	122	01
GP1806N, NC, NO-B	6	235	01
GP1808N, NC, NO-B	8	430	01
GP1810N, NC, NO-B	10	640	01
GP1812N, NC, NO-B	12	960	01
GP1816N, NC, NO-B	16	1.550	01
GP1820N, NC, NO-B	20	2.630	01
GP1830N, NC, NO-B	30	5.750	01



with sealed and rust resistant guides

Order no.	Stroke per jaw [mm]	Gripping force [N] max.	Catalogue no.
Product information			
GP206N	3	155	01
GP210N	5	465	01



Long Stroke **Grippers**

with T-slot guides

Order no.	Stroke per jaw [mm]	Gripping force [N] max.	Catalogue no.
Product Information			01
GH6040-B	40	145	01
GH6060-B	60	145	01
GH6080-B	80	145	01
GH6140-B	40	455	01
GH6160-B	60	455	01
GH6180-B	80	455	01
GH6240-B	40	1.275	01
GH6260-B	60	1.275	01
GH6280-B	80	1.275	01
GH62100-B	100	1.275	01
GH62150-B	150	1.275	01
GH6460-B	60	3.250	01
GH64100-B	100	3.250	01
GH64150-B	150	3.250	01
GH64200-B	200	3.250	01
GHK6140	40	455	01
GHK6160	60	455	01
GHK6180	80	455	01
GHK6240	40	1.275	01
GHK6260	60	1.275	01
GHK6280	80	1.275	01
GHK62100	100	1.275	01
GHK62150	150	1.275	01
GHK6460	60	3.250	01
GHK64100	100	3.250	01
GHK64150	150	3.250	01
GHK64200	200	3.250	01

NEW



with round guides

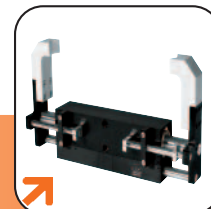
Order no.	Stroke per jaw [mm]	Gripping force [N] max.	Catalogue no.
Product Information			01
GH5230	30	1.050	01
GH5260	60	1.050	01



Long Stroke **Grippers**

with round guides

Order no.	Stroke per jaw [mm]	Gripping force [N] max.	Catalogue no.
Product Information			01
GH90	45	140	01
GH100	50	800	01
GH150	75	800	01
GH200	100	800	01



with linear guides

Order no.	Stroke per jaw [mm]	Gripping force [N] max.	Catalogue no.
Product Information			01
GH7665	65	8.500	01
GH76100	100	8.500	01



Pinzas **de tres mordazas**

Nuevo

con guía de ranura en T

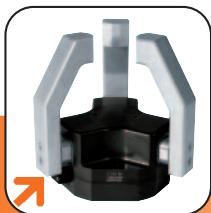
Referencia	Recorrido por Backe [mm]	Fuerza de agarre	N° de catálogo
Información sobre el producto			250
GD303N, NC, NO	3	255	254
GD304N, NC, NO	4	560	256
GD304S, SC, SO	2	1.160	256
GD306N, NC, NO	6	800	258
GD306S, SC, SO	3	1.700	258
GD308N, NC, NO	8	1.125	260
GD308S, SC, SO	4	2.440	260
Información sobre el producto			264
GD310N, NC, NO-B	10	1.800	268
GD310S, SC, SO-B	5	4.000	268
GD312N, NC, NO-B	12	3.250	270
GD312S, SC, SO-B	6	7.000	270
GD316N, NC, NO-B	16	6.800	272
GD316S, SC, SO-B	8	14.100	272
GD320N-B	20	7.100	274
GD320S-B	10	15.800	274
GD330N-B	30	15.200	276



Nuevo

con guía cuadrada estanca

Referencia	Recorrido por Backe [mm]	Fuerza de agarre	N° de catálogo
Información sobre el producto			280
GD1704N, NC, NO	4	400	284
GD1706N, NC, NO	6	560	286
GD1708N, NC, NO	8	950	288
GD1710N, NC, NO	10	1.400	290
GD1712N, NC, NO	12	2.250	292
GD1716N, NC, NO	16	4.700	294
GD1720N	20	5.250	296



Pinzas de tres mordazas

Pinzas de tres mordazas de gran recorrido

Referencia	Recorrido por mordaza [mm]	Fuerza de agarre [N] máx.	Nº de catálogo
Información sobre el producto			300
GD530	30	1.300	304
GD540	40	2.480	306
GD560	60	2.480	308



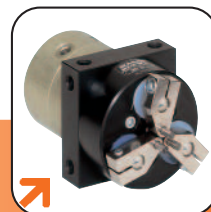
estanca e inoxidable

Referencia	Recorrido por mordaza [mm]	Fuerza de agarre [N] máx.	Nº de catálogo
Información sobre el producto			312
GD46N	3	270	316
GD70N	4	1.180	318
GD110N	6	1.700	320
GD110S	3	3.300	320
GD160N	8	2.320	322
GD160S	4	4.580	322



con gran recorrido

Referencia	Recorrido por mordaza [°]	Fuerza de agarre [N] máx.	Nº de catálogo
Información sobre el producto			326
GD1-B	130	0,12330	
GD10	130	1	333
GD50	120	9	334



Pinzas angulares

Nuevo

Pinzas de palanca acodada

Referencia	Recorrido por mordaza [°]	Fuerza de agarre [N] máx.	N° de catálogo
Información sobre el producto			01
GK15N	90	70	01
GK15NC	90	100	01
GK20N	90	150	01
GK20NC	90	210	01
GK25N	90	440	01
GK25NC	90	610	01
GK35N	90	950	01
GK35NC	90	1250	01
GK40N	90	1400	01
GK40NC	90	1820	01
GK50N	90	3500	01
GK50NC	90	4250	01



Nuevo

Minipinzas angulares

Referencia	Recorrido por mordaza [°]	Par de agarre [Nm] máx.	N° de catálogo
Información sobre el producto			01
MGW801N	37,5	0,03	01
MGW802N	37,5	0,05	01
MGW803N	37,5	0,23	01
MGW803NC	37,5	0,31	01
MGW804N	37,5	0,41	01
MGW804NC	37,5	0,52	01
MGW806NC	37,5	1,02	01
MGW806NC	37,5	1,02	01



Pinzas angulares Serie SGW

Referencia	Recorrido por mordaza [°]	Par de agarre [Nm] máx.	N° de catálogo
Información sobre el producto			01
SGW14N	23	0,8	01
SGW14NC	23	0,8	01
SGW25N	23	3,5	01
SGW25NC	23	3,5	01
SGW35N	23	10,0	01
SGW35NC	23	10,0	01



Pinzas angulares

Pinzas angulares Serie GG

Referencia	Recorrido por mordaza [°]	Par de agarre [Nm] máx.	Nº de catálogo
Información sobre el producto			01
GG25N, NC	35	4,1	01
GG32N, NC	35	9,0	01
GG50N, NC	35	45,0	01
GG70N, NC	35	122,0	01
GG100N, NC	35	264,0	01



Pinzas angulares Serie GG

Referencia	Recorrido por mordaza [°]	Par de agarre [Nm] máx.	Nº de catálogo
Información sobre el producto			01
GG2060N	35	29	01

Nuevo



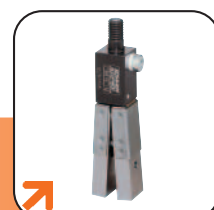
Pinzas de tenazas

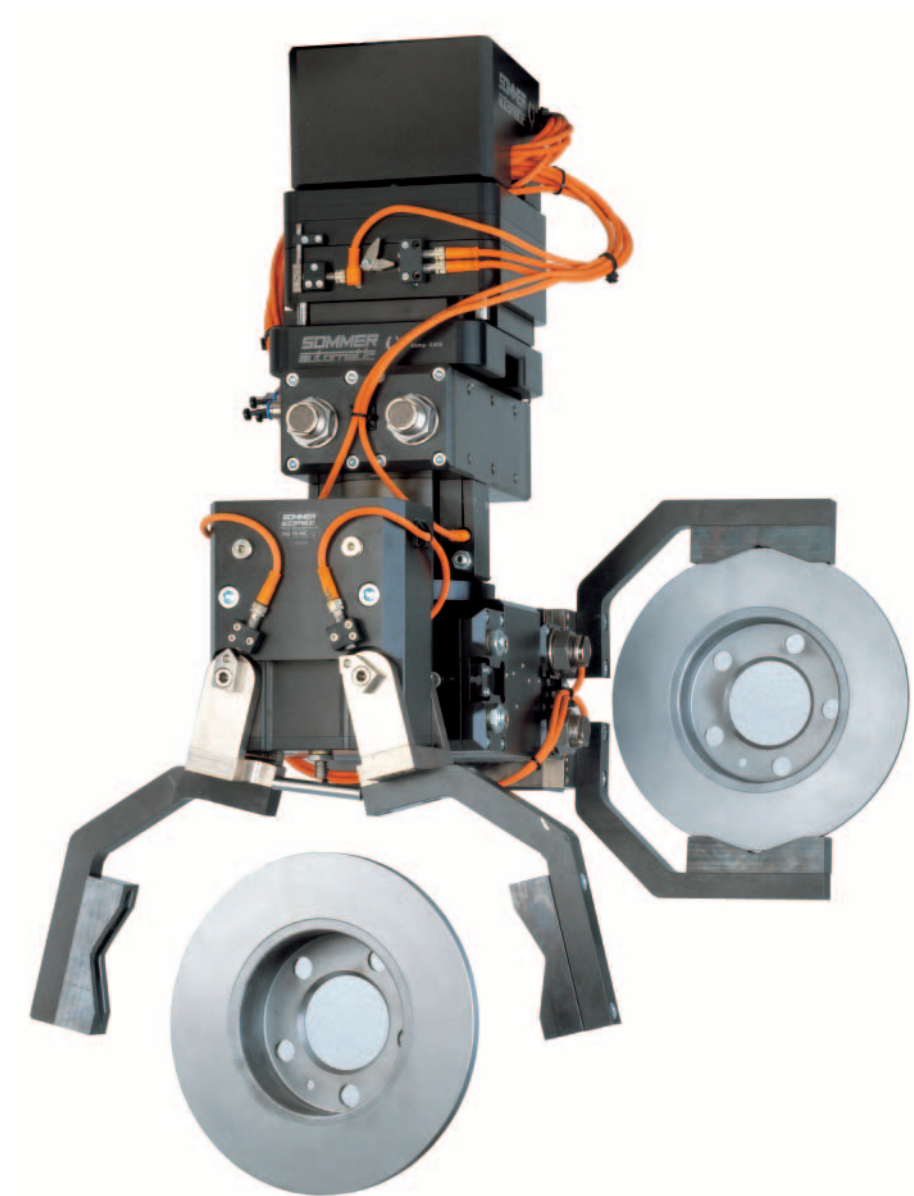
Referencia	Recorrido por mordaza [°]	Par de agarre [Nm] máx.	Nº de catálogo
Información sobre el producto			01
GZ8-16E	5	0,12	01
GZ8-16D	5	0,15	01
GZ11-18E	4,5	0,48	01
GZ18-23D	3,5	1,10	01
GZ25-35E	4	4,00	01
GZ25-35G	4	5,40	01
GZ25-35D	4	5,40	01
GZ55-65D	4	5,40	01



Minipinzas de tenazas

Referencia	Recorrido por mordaza [°]	Par de agarre [Nm] máx.	Nº de catálogo
Información sobre el producto			01
GM10	3,5	0,12	01
GM16	3,5	0,20	01
GM16D	3,5	0,40	01
GM22D	3,5	0,55	01





Looking for top performance?

We can do more than developing, producing and marketing individual parts. You will receive our extensive engineering know-how from us. For your individual solution.

Grippers *electrical*

Order no.	Stroke per jaw [mm]	Internal gripping force [N]	External gripping force [N]	Catalogue no.
Product Information				02
GEP1402	2	140	140	02
GEP1406C	6	350	-	02
GEP1406O	6	-	350	02
GEP1602	2	115	115	02
GEP1606C	6	280	-	02
GEP1606O	6	-	280	02



Order no.	Stroke per jaw [mm]	Retention force [N]	Catalogue no.
Product Information			02
GEH8240S	40	900	02
GEH8660S	60	3200	02

NEW



Order no.	Stroke per jaw [mm]	Internal gripping force [N]	External gripping force [N]	Catalogue no.
Product Information				02
GED1302	2	140	140	02
GED1306C	6	350	-	02
GED1306O	6	-	350	02
GED1502	2	115	115	02
GED1506C	6	290	-	02
GED1506O	6	-	290	02



Collet Gripper



Order no.	Stroke per jaw [mm]	Gripping moment [N] max.	Catalogue no.
Product Information			04
LG4-20	1	0,5	04
LG4-20V	1	0,5	04
LG20-30	1	2,0	04
LG20-30V	1	2,0	04
LG30-50	1	3,0	04

Internal-Hole Gripper



Order no.	Clamping diameter min./max. [mm]	Gripping force [N] max. in opening	Catalogue no.
Product Information			04
LG15-18	15,0 / 17,5	100	04
LG18-22	17,5 / 21,5	100	04
LG22-26	21,5 / 25,5	150	04
LG26-30	25,5 / 29,5	150	04
LG30-35	29,5 / 4,5	200	04
LG35-39	34,5 / 39	300	04
LG40-45	39,5 / 46	400	04
LG46-51	45,5 / 51,5	500	04
LG51-56	50,5 / 57,5	750	04
LG56-62	55,5 / 63	900	04
LG63-70	62,5 / 70,5	1.100	04
LG71-80	70,5 / 81	1.500	04
LG76-84	75,5 / 84	1.700	04
LG81-90	80,5 / 91,5	2.000	04
LG91-100	90,5 / 100,5	2.500	04
LG100-110	99,5 / 110,5	2.800	04
LG110-120	109,5 / 120,5	3.500	04
LG120-135	119,5 / 135,5	3.500	04

Needle Gripper



Order no.	Stroke adjustable min./max. [mm]	Gripping force in extraction [N]	Catalogue no.
Product Information			04
ST36	0 / 1,5	100	04
ST40	0 / 2	160	04

Grippers *special*

Needle Gripper

Order no.	Stroke adjustable min./max. [mm]	Gripping force in extraction [N]	Catalogue no.
Product Information			04
SCH20	0/6	35	04
SCH23	0/6	35	04



O-Ring Gripper

Order no.	Opening stroke adjustable [mm]	Gripping force [N] in opening	Catalogue no.
Product Information			04
GS65	3 - 6	300	04
GS1015	1,6 - 10	1. 450	04



Cutting Tongs

Order no.	Stroke per jaw [°]	Gripping force in closing [N]	Catalogue no.
Product Information			04
ZK22	7,5	3.600	04
ZK33	9,0	6.800	04



Tube Gripper

Order no.	Grip diameter min./max. [mm]	Gripping force in closing [N]	Catalogue no.
Product Information			04
RG0-30	0 / 28	350	04
RG10-60	10 / 58	1.000	04



Parallel Gripper *with tool intake*

Order no.	Tool intake	Gripping force in closing adjustable [N]	Catalogue no.
Product Information			04
GFP2012NC-14	HSK-A63	460-1140	04
GFP2012NC-25	VDI 40	460-1140	04
GFP2012NC-34	Capto C4	460-1140	04



Grip & Rotate Modules

Parallel Gripper with T-slot guides

Order no.	Stroke per jaw [mm]	Gripping force [N] max.	Catalogue no.
Product Information			05
DGP404N	4	115	05
DGP404NC	4	155	05
DGP404NO	4	155	05
DGP404S	2	255	05
DGP404SC	2	350	05
DGP404SO	2	350	05



Parallell Gripper with roller guides

Order no.	Stroke per jaw [mm]	Gripping force [N] max.	Catalogue no.
Product Information			05
DGP12N	3	31	05
DGP12NC	3	52	05
DGP12NO	3	52	05



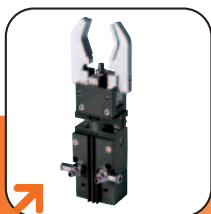
Three-Jaw-Gripper with T-slot guides

Order no.	Stroke per jaw [mm]	Gripping force [N] max.	Catalogue no.
Product Information			05
DGD304N	4	114	05
DGD304NC	4	154	05
DGD304NO	4	154	05
DGD304S	2	238	05
DGD304SC	2	318	05
DGD304SO	2	318	05



Pivoting Arm Gripper

Order no.	Stroke per jaw [°]	Gripping moment [Nm] in closing	Catalogue no.
Product Information			05
DGK20N	90	3	05



Separators

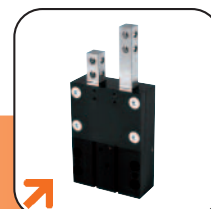
VEG-B

Order no.	Stroke [mm]	Force in retraction [N]	Force in extraction [N]	Catalogue no.
Product Information				06
VEG10-B	10	30	40	06
VEG14-B	20	65	80	06
VEG15-B	40	65	80	06
VEG22-B	30	170	220	06
VEG23-B	60	170	220	06



VE-B

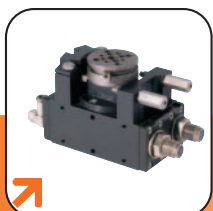
Order no.	Stroke [mm]	Force in retraction [N]	Force in extraction [N]	Catalogue no.
Product Information				06
VE10-B	10	30	40	06
VE14-B	20	65	80	06
VE15-B	40	65	80	06
VE22-B	30	170	220	06
VE23-B	60	170	220	06



Flat Swivel Units



Order no	Swivel angel [°]	Torque [Nm]	Catalogue no.
Product Information			07
SEF19	90 or 180	1,2	07
SEF19S	90 or 180	1,2	07
SEF30	90 or 180	3,5	07
SEF30S	90 or 180	3,5	07



Order no	Swivel angel [°]	Torque [Nm]	Catalogue no.
Product Information			07
SF42-90N	90	1,4	07
SF42-90I4	90	0,8	07
SF42-180N	180	1,4	07
SF42-180I4	180	0,8	07



Order no	Swivel angel [°]	Torque [Nm]	Catalogue no.
Product Information			07
SF50-90N	90	2,4 Nm	07
SF50-180N	180	2,4 Nm	07
SF50-90ND4	90	1,5 Nm	07
SF50-180ND4	180	1,5 Nm	07
SF74-90N	90	7,3 Nm	07
SF74-180N	180	7,3 Nm	07
SF74-90ND4	90	5,5 Nm	07
SF74-180ND4	180	5,5 Nm	07
SF74-90ND6	90	5,5 Nm	07
SF74-180ND6	180	5,5 Nm	07
SF100-90N	90	20 Nm	07
SF100-180N	180	20 Nm	07
SF100-90ND4	90	15 Nm	07
SF100-180ND4	180	15 Nm	07
SF100-90ND6	90	15 Nm	07
SF100-180ND6	180	15 Nm	07

Flat Swivel Units

Order no	Swivel angel [°]	Torque [Nm]	Catalogue no.
Product Information			07
SF150-90S	90	46	07
SF150-180S	180	46	07
SF190-90S	90	115	07
SF190-180S	180	115	07



Order no	Swivel angel [°]	Torque [Nm]	Catalogue no.
Product Information			07
SF125-90N-B	90	38	07
SF125-90I4-B	90	34	07
SF125-90I8-B	90	32	07
SF125-180N-B	180	38	07
SF125-180I4-B	180	34	07
SF125-180I8-B	180	32	07
SF155-90N	90	62	07
SF155-90I4	90	58	07
SF155-90I8	90	54	07
SF155-180N	180	62	07
SF155-180I4	180	58	07
SF155-180I8	180	54	07
SF195-90N	90	130	07
SF195-90I4	90	125	07
SF195-90I8	90	120	07
SF195-180N	180	130	07
SF195-180I4	180	125	07
SF195-180I8	180	120	07



Flat Swivel Units



Order no	Swivel angel [°]	Torque [Nm]	Catalogue no.
Product Information			07
SF74ML	+90/0/-90	6	07
SF74MLD4	+90/0/-90	4,5	07
SF74MLD6	+90/0/-90	4,5	07
SF125ML-B	+90/0/-90	38	07
SF125MLI4-B	+90/0/-90	34	07
SF125MLI8-B	+90/0/-90	32	07



Order no	Swivel angel [°]	Torque [Nm]	Catalogue no.
Product Information			07
SF74M-B	+90/0/-90	6	07
SF74MD4-B	+90/0/-90	4,5	07
SF74MD6-B	+90/0/-90	4,5	07
SF100M-B	+90/0/-90	20	07
SF100MD4-B	+90/0/-90	15	07
SF100MD6-B	+90/0/-90	15	07

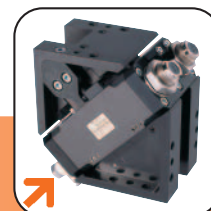


Order no	Swivel angel [°]	Torque [Nm]	Catalogue no.
Product Information			07
SF155M	+90/0/-90	62	07
SF155MI4	+90/0/-90	58	07
SF155MI8	+90/0/-90	54	07
SF195M	+90/0/-90	130	07
SF195MI4	+90/0/-90	125	07
SF195MI8	+90/0/-90	120	07
SF150SM	+90/0/-90	46	07
SF190SM	+90/0/-90	115	07

Swivel Units

Angled Swivel Unit

Order no	Swivel angel [°]	Torque [Nm]	Catalogue no.
Product Information			07
SW50D4	180	1,5	07
SW74D4	180	5,5	07
SW100D4	180	15	07
SW150D4	180	46	07
SW190D8	180	110	07



Swivel Unit electrical

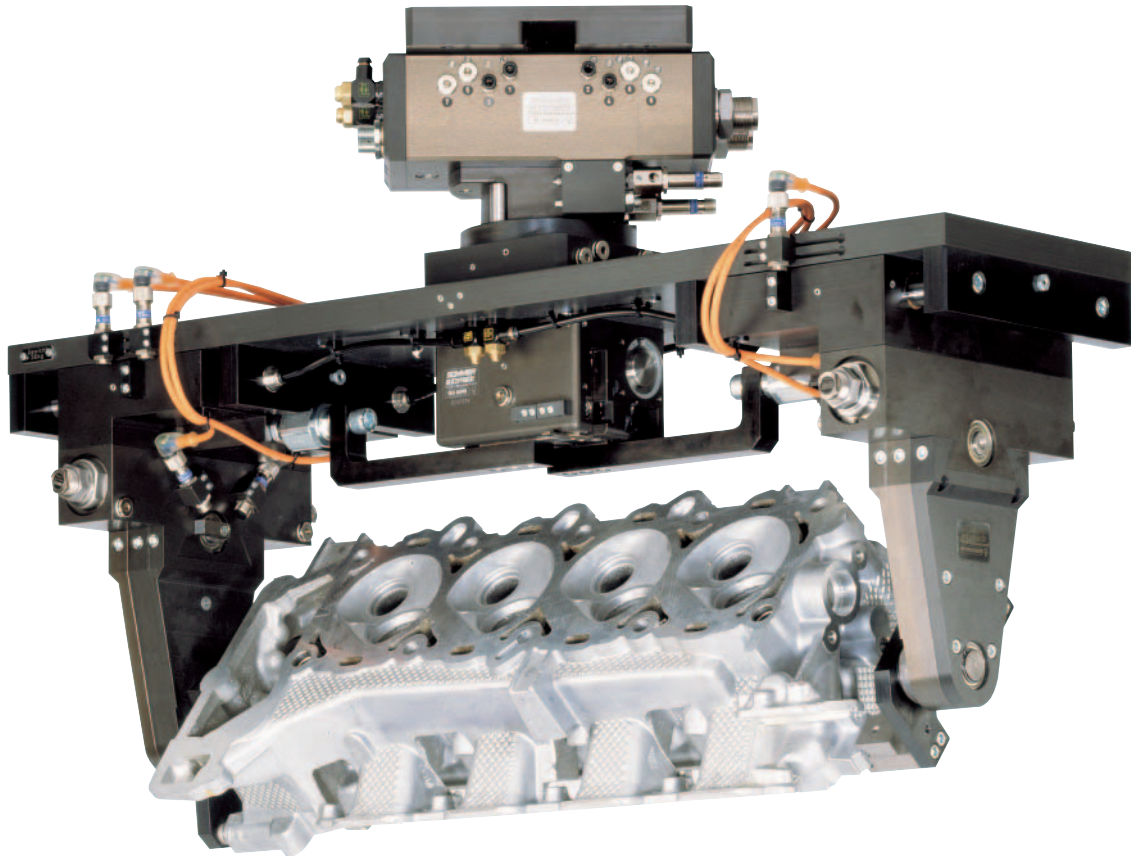
Order no	Swivel angel [°]	Torque [Nm]	Catalogue no.
Product Information			07
DEF60	min. 30 - max. 330	1,6	07



Swivel Unit electrical

Order no	Swivel angel [°]	Torque [Nm]	Catalogue no.
Product Information			07
DES140NC	unlimited	12	07





Looking for top performance?

We can do more than developing, producing and marketing individual parts. You will receive our extensive engineering know-how from us. For your individual solution.

Rotating Jaws

Order no	Swivel angel [°]	Torque /pair [Nm]	Catalogue no.
Product Information			10
SB32-D	90/180	0,2	10
SB40-B	90/180	0,6	10
SB54-B	90/180	3,2	10



Order no	Swivel angel [°]	Torque [Nm]	Catalogue no.
Product Information			10
SB50-90B	90	1,2	10
SB50-180B	180	1,2	10
SB50G	-	-	10
SB74-90B	90	3,5	10
SB74-180B	180	3,5	10
SB74G	-	-	10
SB100-90B	90	10,0	10
SB100-180B	180	10,0	10
SB100G	-	-	10
SB150-90	90	23,0	10
SB150-180	180	23,0	10
SB150G	-	-	10
SB190-90	90	57,0	10
SB190-180	180	57,0	10
SB190G	-	-	10



Axis Modules

XY-Compensator

Order no.	Stroke XY ± [mm]	Handling weight recommended [kg]	Catalogue no.
Product Information			11
XY70	3	6	11
XY100	5	12	11
XY160	8	30	11
XY220	10	150	11
XY320	15	400	11



XYZ-Compensator

Order no.	Stroke XY ± [mm]	Stroke Z [mm]	Handling weight recommended [kg]	Catalogue no.
XYZ70	3	6	6	11
XYZ100	5	10	12	11
XYZ160	8	16	30	11
XYZ220	10	25	150	11



Crashprotection

Order no.	Z alignment [mm]	Horizontal alignment [°]	Handling weight recommended [kg]	Catalogue no.
Product Information				11
CS80-B	12,5	12,5	6	11
CS100-B	10,5	12,5	12	11
CS160	18,0	9,0	60	11



Alignment Compensator

Order no.	Horizontal alignment [°]	Handling weight recommended [kg]	Catalogue no.
Product Information			11
FG79	2	10	11
FG100	4	20	11



Tool Changers

Tool Changer

Order no.	Handling weight recommended [kg]	Pneumatic Connectors [Stück]	Catalogue no.
Product Information			12
WW50F	10	4	12
WW50L	-	4	12
WW80F	20	6	12
WW80L	-	6	12
WW100F	20	12	12
WW100L	-	12	12
WW120F-B	40	9	12
WW120F-B-99	80	9	12
WW120L-B	-	9	12
WW180F-B	180	6	12
WW180L-B	-	6	12
WW220F	180	16	12
WW220L	-	16	12
WW250F	500	optional	12
WW250L	-	optional	12



Tool Coupling

Order no.	Handling weight recommended [kg]	Weight [g]	Catalogue no.
Product Information			12
WK50F	4	240	12
WK50L	-	170	12



Manuel Changer

Order no.	Handling weight recommended [kg]	Weight [g]	Catalogue no.
Product Information			12
HW80F	100	620	12
HW80L	-	340	12



Tool Changer

Order no.	Connection flange	Handling weight recommended [kg]	Catalogue no.
Product Information			13
WWR40F/WWR40L	TK40	15	13
WWR50F/WWR50L	TK50	15	13
WWR63F/WWR63L	TK63	50	13
WWR80F/WWR80L	TK80	50	13
WWR100F/WWR100L	TK100	90	13
WWR125F/WWR125L	TK125	200	13
WWR160F/WWR160L	TK160	200	13



Manuel Changer

Order No.	Connection flange	Handling weight recommended [kg]	Catalogue no.
Product Information			13
HWR80F/HWR80L	TK80	50	13



Rotary pneumatic distributor

Order No.	Connection flange	Handling weight recommended [kg]	Catalogue no.
Product Information			13
DVR40I4	TK40	15	13
DVR50I4	TK50	15	13
DVR63I6	TK52	50	13
DVR80I6	TK80	50	13
DVR100I4/DVR100I8	TK100	90	13
DVR125I4/DVR125I8	TK125	200	13
DVR160I4/DVR160I8	TK160	200	13



Axial Compensation

Order no.	Connection flange Z [mm]	Handling weight recommended [kg]	Catalogue no.
Product Information			13
AR40/40P	TK40	15	13
AR50/50P	TK50	15	13
AR63/63P	TK63	50	13
AR80/80P	TK80	50	13
AR100/100P	TK100	90	13
AR125/125P	TK125	200	13
AR160/160P	TK160	200	13



Crashprotection

Order no.	Connection flange Z [mm]	Handling weight recommended [kg]	Catalogue no.
Product Information			13
CSR50	12,5	6	13
CSR63	10,5	12	13
CSR80	14,0	35	13
CSR100	118,0	60	13



Attachment Plate

Order no.	for Gripper	Catalogue no.
APRGISO25	GP404, GP1804	13
APRGISO31-5	GP406, GP1806	13
APRGISO40	GP408, GP1808	13
APRGISO50	GP410, GP1810	13
APRGISO63	GP412, GP1812	13
APRGISO80	GP416, GP1816	13
APRGISO100	GP420, GP1820	13
APRGISO125	GP430, GP1830	13
APRGDISO31-5	GD304, GD1704	13
APRGDISO40	GD306, GD1706	13
APRGDISO50	GD308, GD1708	13
APRGDISO63	GD310, GD1710	13
APRGDISO80	GD312, GD1712	13
APRGDISO100	GD316, GD1716	13
APRGDISO125	GD320, GD1720	13



Linear **Cylinders**

HZ

Order no.	Stroke [mm]	Extension force max. [N]	Retraction force max. [N]	Catalogue no.
Product Information				14
HZ40-50D2	50	720	600	14
HZ40-100D2	100	720	600	14



LS

Order no.	Stroke [mm]	Extension force max. [N]	Retraction force max. [N]	Catalogue no.
Product Information				14
LS10-25	25	40	30	14
LS10-50	50	40	30	14
LS16-25	25	100	85	14
LS16-50	50	100	85	14



LSF

Order no.	Stroke [mm]	Extension force max. [N]	Retraction force max. [N]	Catalogue no.
Product Information				14
LSF25-50	50	265	220	14
LSF25-100	100	265	220	14



LSX

Order no.	Stroke [mm]	Extension force max. [N]	Retraction force max. [N]	Catalogue no.
Product Information				14
LSX25-50	50	265	220	14
LSX25-100	100	265	220	14
LSX25-200	200	265	220	14
LSX40-100	100	750	680	14
LSX40-200	200	750	680	14



Linear **Cylinders**

SH

Order no.	Stroke [mm]	Extension force max. [N]	Retraction force max. [N]	Catalogue no.
Product Information				14
SH-X7	7	170	100	14
SH-X15	15	170	100	14
SH-X25	25	170	100	14
SH-X50	50	170	100	14
SH-XD25	25	100	100	14
SH-XD50	50	100	100	14



LI

Order no.	Stroke [mm]	Extension force max. [N]	Retraction force max. [N]	Catalogue no.
Product Information				14
LI16-20	20	100	80	14
LI16-35	35	100	80	14
LI30-15	14,5	270	200	14
LI30-30	29,5	270	200	14
LI30-60	59,5	270	200	14
LI30-90	89,5	270	200	14
LI40-40	39,5	450	270	14
LI40-90	89,5	450	270	14
LI16-50D	50,0	80	80	14
LI30-60D	59,5	200	200	14
LI30-90D	89,5	200	200	14
LI40-90S	90,0	270	270	14
LI40-130S	130	270	270	14
LI40-160S	160	270	270	14
LI40-200S	200	270	270	14
LI40-250S	250	270	270	14
LI40-300S	300	270	270	14
LI50-50S	50	950	950	14
LI50-90S	90	950	950	14
LI50-130S	130	950	950	14
LI50-160S	160	950	950	14
LI50-200S	200	950	950	14
LI50-250S	250	950	950	14
LI50-300S	300	950	950	14



Shock Absorbers

PowerStop

Order no.	Stroke [mm]	Energy absorption/ Stroke [Nm]	Impact speed min./max. [m/s]	Eff. mass max./min. [kg]	Catalogue no.
M6x0.5S	4	1	2,0/3,0	0,5/0,2	15
M6x0.5M	4	1	1,2/2,5	1,4/0,3	15

PowerStop

Order no.	Stroke [mm]	Energy absorption/ Stroke [Nm]	Impact speed min./max. [m/s]	Eff. mass max./min. [kg]	Catalogue no.
M8x0.75S	5	3,5	2,0/3,5	1,7/0,6	15
M8x0.75M	5	3,5	1,2/2,5	4,8/1,1	15
M8x1S	5	3,5	2,0/3,5	1,7/0,6	15
M8x1M	5	3,5	1,2/2,5	4,8/1,1	15

PowerStop

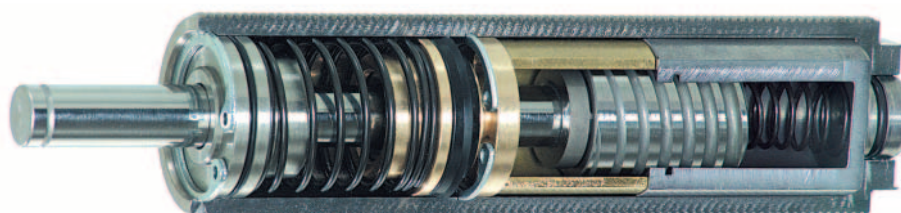
Order no.	Stroke [mm]	Energy absorption/ Stroke [Nm]	Impact speed min./max. [m/s]	Eff. mass max./min. [kg]	Catalogue no.
M10x1S	8	10	2,0/4,0	5/1	15
M10x1M	8	10	1,2/2,2	14/4	15
M10x1H	8	10	0,2/1,4	500/10	15

PowerStop

Order no.	Stroke [mm]	Energy absorption/ Stroke [Nm]	Impact speed min./max. [m/s]	Eff. mass max./min. [kg]	Catalogue no.
M12x1S	10	16	2,0/5,0	85/1	15
M12x1M	10	16	1,2/2,2	22/7	15
M12x1H	10	16	0,2/1,4	800/16	15

PowerStop

Order no.	Stroke [mm]	Energy absorption/ Stroke [Nm]	Impact speed min./max. [m/s]	Eff. mass max./min. [kg]	Catalogue no.
M14x1S	12	31	2,0/5,0	16/2	15
M14x1M	12	31	1,2/2,2	43/13	15
M14x1H	12	31	0,2/1,4	1550/32	15
M14x1.5S	12	31	2,0/5,0	16/2	15
M14x1.5M	12	31	1,2/2,2	43/13	15
M14x1.5H	12	31	0,2/1,4	1550/32	15



Shock Absorbers

PowerStop

Order no.	Stroke [mm]	Energy absorption/ Hub [Nm]	Impact speed min./max. [m/s]	Eff. mass max./min. [kg]	Catalogue no.
M20x1.5S	15	70	1,8/4,5	43/7	15
M20x1.5M	15	70	1,0/2,0	140/35	15
M20x1.5H	15	70	0,2/1,2	3500/97	15
M20x1.5SN	15	150	1,8/4,5	93/15	15
M20x1.5MN	15	150	1,0/2,0	300/75	15
M20x1.5HN	15	150	0,2/1,2	7500/208	15

PowerStop

Order no.	Stroke [mm]	Energy absorption/ Hub [Nm]	Impact speed min./max. [m/s]	Eff. mass max./min. [kg]	Catalogue no.
M25x1.5S	25	210	1,4/4,0	214/26	15
M25x1.5M	25	210	0,6/1,8	1167/130	15
M25x1.5H	25	210	0,2/0,8	10500/65	15
M25x1.5SN	25	550	1,4/4,0	561/69	15
M25x1.5MN	25	550	0,6/1,8	3056/340	15
M25x1.5HN	25	550	0,2/0,8	27500/1719	15

PowerStop

Order no.	Stroke [mm]	Energy absorption/ Hub [Nm]	Impact speed min./max. [m/s]	Eff. mass max./min. [kg]	Catalogue no.
M33x1.5S	30	320	1,4/3,5	327/52	15
M33x1.5M	30	320	0,6/2,0	1778/160	15
M33x1.5H	30	320	0,2/0,8	16000/1000	15
M33x1.5SN	30	900	1,4/3,5	918/147	15
M33x1.5MN	30	900	0,6/2,0	5000/450	15
M33x1.5HN	30	900	0,2/0,8	45000/2813	15

PowerStop

Order no.	Stroke [mm]	Energy absorption/ Hub [Nm]	Impact speed min./max. [m/s]	Eff. mass max./min. [kg]	Catalogue no.
M45x1.5S	25	650	1,4/3,5	663/106	15
M45x1.5M	25	650	0,6/1,6	3611/508	15
M45x1.5H	25	650	0,2/0,7	32500/2653	15
M45x1.5SN	25	1500	1,4/3,5	1531/245	15
M45x1.5MN	25	1500	0,6/1,6	8333/1172	15
M45x1.5HN	25	1500	0,2/0,7	75000/6122	15

PowerStop

Order no.	Stroke [mm]	Energy absorption/ Hub [Nm]	Impact speed min./max. [m/s]	Eff. mass max./min. [kg]	Catalogue no.
M45x1.5LS	50	1.300	1,4/3,5	1327/212	15
M45x1.5LM	50	1.300	0,6/1,6	7222/1016	15
M45x1.5LH	50	1.300	0,2/0,7	65000/5306	15
M45x1.5LSN	50	3.000	1,4/3,5	3061/490	15
M45x1.5LMN	50	3.000	0,6/1,6	16667/2344	15
M45x1.5LHN	50	3.000	0,2/0,7	150000/12245	15



Order no.:	Nominal output [Watt]	Nominal speed [U/min.]	Catalogue no.
Clockwise rotation			
DLM-RK-150-9100	150	9100	16
DLM-RK-150-2200	150	2200	16
DLM-RK-150-1400	150	1400	16
DLM-RK-150-530	150	530	16
DLM-RK-150-330	150	330	16
Reversible			
DLM-RLK-95-6500	95	6500	16
DLM-RLK-95-1600	95	1600	16
DLM-RLK-95-950	95	950	16
DLM-RLK-95-380	95	380	16
DLM-RLK-95-230	95	230	16



Order no.:	Nominal output [Watt]	Nominal speed [U/min.]	Catalogue no.
Clockwise rotation			
DLM-RK-235-9600	236	9600	16
DLM-RK-235-2200	236	2200	16
DLM-RK-235-1650	236	1650	16
DLM-RK-235-1040	236	1040	16
DLM-RK-235-535	225	535	16
DLM-RK-235-380	225	380	16
DLM-RK-235-235	225	235	16
Reversible			
DLM-RLK-150-6500	150	6500	16
DLM-RLK-150-1390	150	1390	16
DLM-RLK-150-1050	150	1050	16
DLM-RLK-150-650	150	650	16
DLM-RLK-150-310	150	310	16
DLM-RLK-150-240	150	240	16
DLM-RLK-150-140	150	140	16



Order no.:	Nominal output [Watt]	Nominal speed [U/min.]	Catalogue no.
Clockwise rotation			
DLM-RK-370-9400	370	9400	16
DLM-RK-370-2600	370	2600	16
DLM-RK-370-1460	370	1460	16
DLM-RK-370-1180	370	1180	16
DLM-RK-370-580	360	580	16
DLM-RK-370-320	360	320	16
DLM-RK-370-260	360	260	16
Reversible			
DLM-RLK-225-7000	225	7000	16
DLM-RLK-225-1960	225	1960	16
DLM-RLK-225-1090	225	1090	16
DLM-RLK-225-880	225	880	16
DLM-RLK-225-435	218	435	16
DLM-RLK-225-240	218	240	16
DLM-RLK-225-190	218	190	16

Air Vane Motors

NEW

Order no.:	Nominal output [Watt]	Nominal speed [U/min.]	Catalogue no.
Clockwise rotation			
DLM-RK-370-160	360	160	16
Reversible			
DLM-RLK-225-120	218	120	16



Order no.:	Nominal output [Watt]	Nominal speed [U/min.]	Catalogue no.
Clockwise rotation			
DLM-RK-370-104	360	104	16
DLM-RK-370-77	360	77	16
DLM-RK-370-58	360	58	16
DLM-RK-370-43	360	43	16
DLM-RK-370-34	360	34	16
Reversible			
DLM-RLK-225-71	218	71	16
DLM-RLK-225-53	218	53	16
DLM-RLK-225-40	218	40	16
DLM-RLK-225-29	218	29	16
DLM-RLK-225-24	218	24	16



Order no.:	Nominal output [Watt]	Nominal speed [U/min.]	Catalogue no.
Clockwise rotation			
DLM-RK-370-25	360	25	16
DLM-RK-370-19	360	19	16
DLM-RK-370-14	360	14	16
DLM-RK-370-10	360	10	16
Reversible			
DLM-RLK-225-18	218	18	16
DLM-RLK-225-13	218	13	16
DLM-RLK-225-10	218	10	16
DLM-RLK-225-07	218	7	16



Order no.:	Nominal output [Watt]	Nominal speed [U/min.]	Catalogue no.
Clockwise rotation			
DLM-RK-610-10500	610	10500	16
DLM-RK-610-3200	610	3200	16
DLM-RK-610-2000	610	2000	16
DLM-RK-610-1200	610	1200	16
DLM-RK-610-730	602	730	16
DLM-RK-610-460	602	460	16
DLM-RK-610-280	602	280	16
Reversible			
DLM-RLK-500-8100	500	8100	16
DLM-RLK-500-2500	500	2500	16
DLM-RLK-500-1600	500	1600	16
DLM-RLK-500-950	500	950	16
DLM-RLK-500-560	490	560	16
DLM-RLK-500-350	490	350	16
DLM-RLK-500-215	490	215	16



Order no.:	Nominal output [Watt]	Nominal speed [U/min.]	Catalogue no.
Clockwise rotation			
DLM-RK-610-160	585	160	16
DLM-RK-610-100	585	100	16
DLM-RK-610-60	585	60	16
Reversible			
DLM-RLK-500-120	480	120	16
DLM-RLK-500-77	480	77	16
DLM-RLK-500-46	480	46	16



Order no.:	Nominal output [Watt]	Nominal speed [U/min.]	Catalogue no.
Clockwise rotation			
DLM-RK-610-39	575	39	16
DLM-RK-610-25	575	25	16
Reversible			
DLM-RLK-500-30	470	30	16
DLM-RLK-500-19	470	19	16



Air Vane Motors

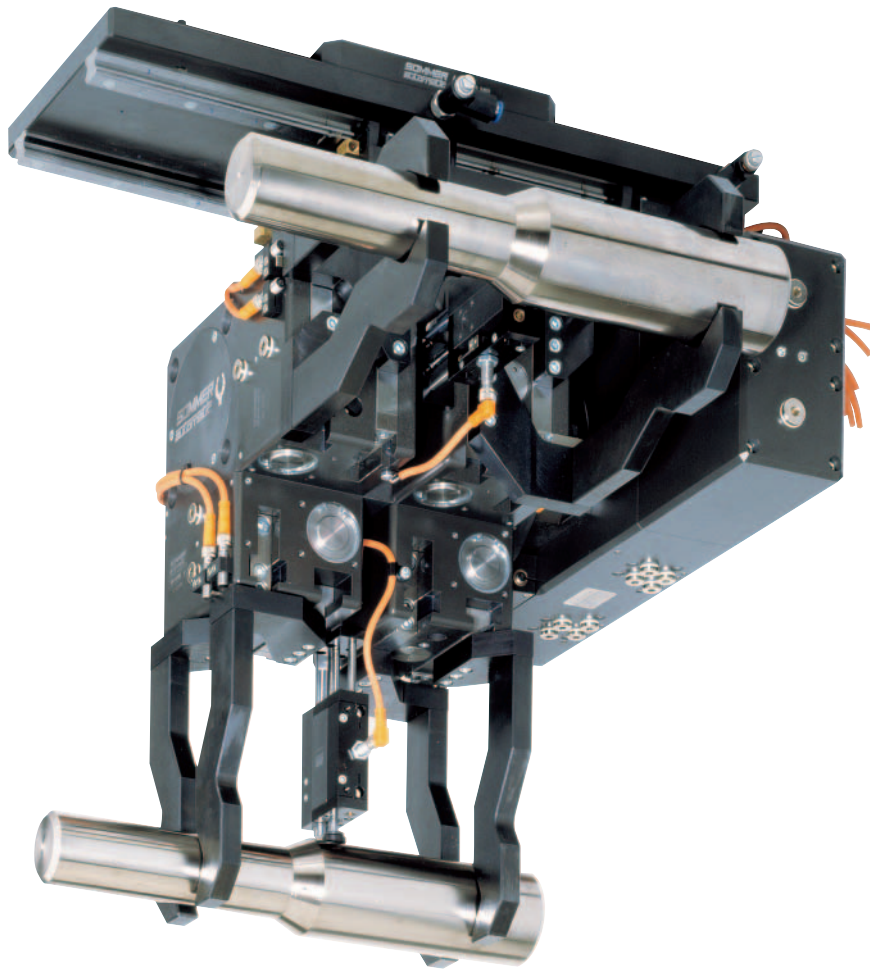
NEW

Order no.:	Nominal output [Watt]	Nominal speed [U/min.]	Catalogue no.
Clockwise rotation			
DLM-RK-1130-9300	1130	9300	16
DLM-RK-1130-2700	1130	2700	16
DLM-RK-1130-1600	1130	1600	16
DLM-RK-1130-1200	1130	1200	16
DLM-RK-1130-590	1100	590	16
DLM-RK-1130-360	1100	360	16
DLM-RK-1130-260	1100	260	16
Reversible			
DLM-RLK-770-6800	772	6800	16
DLM-RLK-770-1970	772	1970	16
DLM-RLK-770-1200	772	1200	16
DLM-RLK-770-890	772	890	16
DLM-RLK-770-425	752	425	16
DLM-RLK-770-260	752	260	16
DLM-RLK-770-190	752	190	16



Order no.:	Nominal output [Watt]	Nominal speed [U/min.]	Catalogue no.
Clockwise rotation			
DLM-RK-1130-140	1080	140	16
DLM-RK-1130-85	1080	85	16
DLM-RK-1130-65	1080	65	16
Reversible			
DLM-RLK-770-100	733	100	16
DLM-RLK-770-65	733	65	16
DLM-RLK-770-45	733	45	16





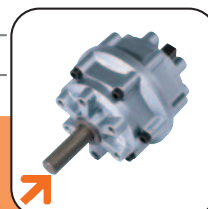
Looking for top performance?

We can do more than developing, producing and marketing individual parts. You will receive our extensive engineering know-how from us. For your individual solution.

Rotary Cylinders

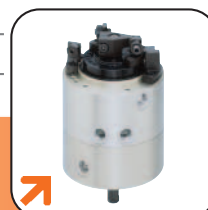
Pneumatic Rotor

Order no.	Pivot angle [°]	Torque [Nm]	Pivot time [s]	Catalogue no..
Product Information				17
PRN1-90-B	90	0,15	0,10	17
PRN1-180-B	180	0,15	0,17	17
PRN3-90-B	90	0,38	0,13	17
PRN3-180-B	180	0,38	0,20	17
PRN10-90-B	90	1,20	0,13	17
PRN10-180-B	180	1,20	0,20	17
PRN20-90-B	90	2,10	0,14	17
PRN20-180-B	180	2,10	0,25	17
PRN30-90	90	4,10	0,17	17
PRN30-180	180	4,10	0,33	17
PRN30-270	270	4,10	0,50	17
PRN50-100	100	12,80	0,17	17
PRN50-180	180	5,90	0,33	17
PRN50-280	280	5,90	0,50	17
PRN150-100	100	41,50	0,25	17
PRN150-180	180	18,00	0,38	17
PRN150-280	280	18,00	0,63	17
PRN300-100	100	83,00	0,33	17
PRN300-180	180	34,50	0,50	17
PRN300-280	280	34,50	0,71	17
PRN800-180	180	247,00	0,45	17
PRN800-280	280	123,00	1,00	17
Accessory PRN				17



Step-Rotor

Order no.	Drive	Pivot angle [°]	Torque [Nm]	Pivot time [s]	Catalogue no.
Product Information					17
SH-5	External blade	180	2,73	0,80	17
SH-5	Internal blade	180	0,59	0,50	17
SH-20	External blade	180	7,20	1,10	17
SH-20	Internal blade	180	2,35	0,80	17



Vacuum-Components



Mini vacuum cups SM/SG

Catalogue no. 18

Range of application:

- flat and light arched surface

Special features:

- possible to transfer high valve forces
- suction diameter from 1 mm



Knobbed vacuum cups NS/PNS

Catalogue no. 18

Range of application:

- flat and unstable surfaces

Special features:

- knobs prevent to suck away thin material
- high stability



Bellows cups SFK/SF

Catalogue no. 18

Range of application:

- light arched, bevel and uneven surfaces

Special features:

- compensates differences in height
- the suction process creates a lifting effect



Torus vacuum cups SR/SK

Catalogue no. 18

Range of application:

- flat, light arched and not closed surfaces

Special features:

- rubber core allowed picking up parts with holes



Oval vacuum cups OV/POV/KOV

Catalogue no. 18

Range of application:

- long, narrow and light arched surfaces

Special features:

- depending on type, metal base plate
- flexibel seal lips

Vacuum-Components



Oval bellow vacuum cups SFO

Catalogue no. 18

Range of application:

- long, narrow and light uneven surfaces

Special features:

- compensates differences in height
- the suction process creates a lifting effect



Adapter

Catalogue no. 18

Range of application:

- connection between suction cup and adapter

Special features:

- depending on type with integrated pin for workpiece identification available
- depending on type with vacuum generator available



Hand-held vacuum

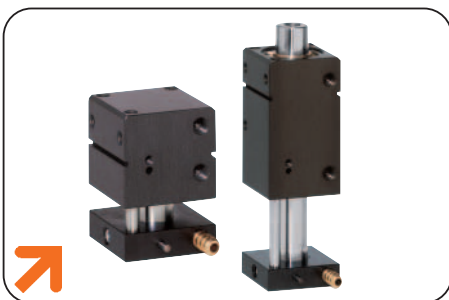
Catalogue no. 18

Range of application:

- handling of very small parts with flat and light arched surfaces

Special features:

- integrated vacuum generator, vacuum can be applied or removed by hand
- possible to combine with suction cup of the SM series



Compact linear cylinder

Catalogue no. 18

Range of application:

- load and unload of workpieces

Special features:

- integrated vacuum generator, vacuum can be applied or removed by hand
- possible to combine with suction cup of the SG series



Vacuum generator

Catalogue no. 18

Range of application:

- vacuum generation

Special features:

- compact design